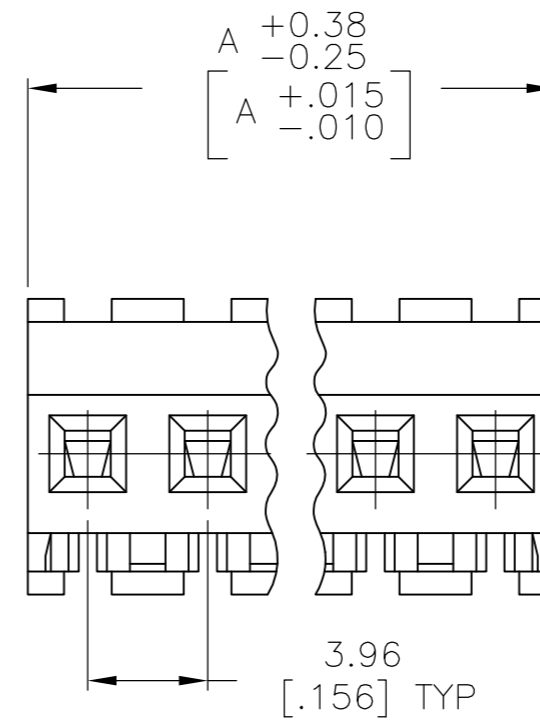
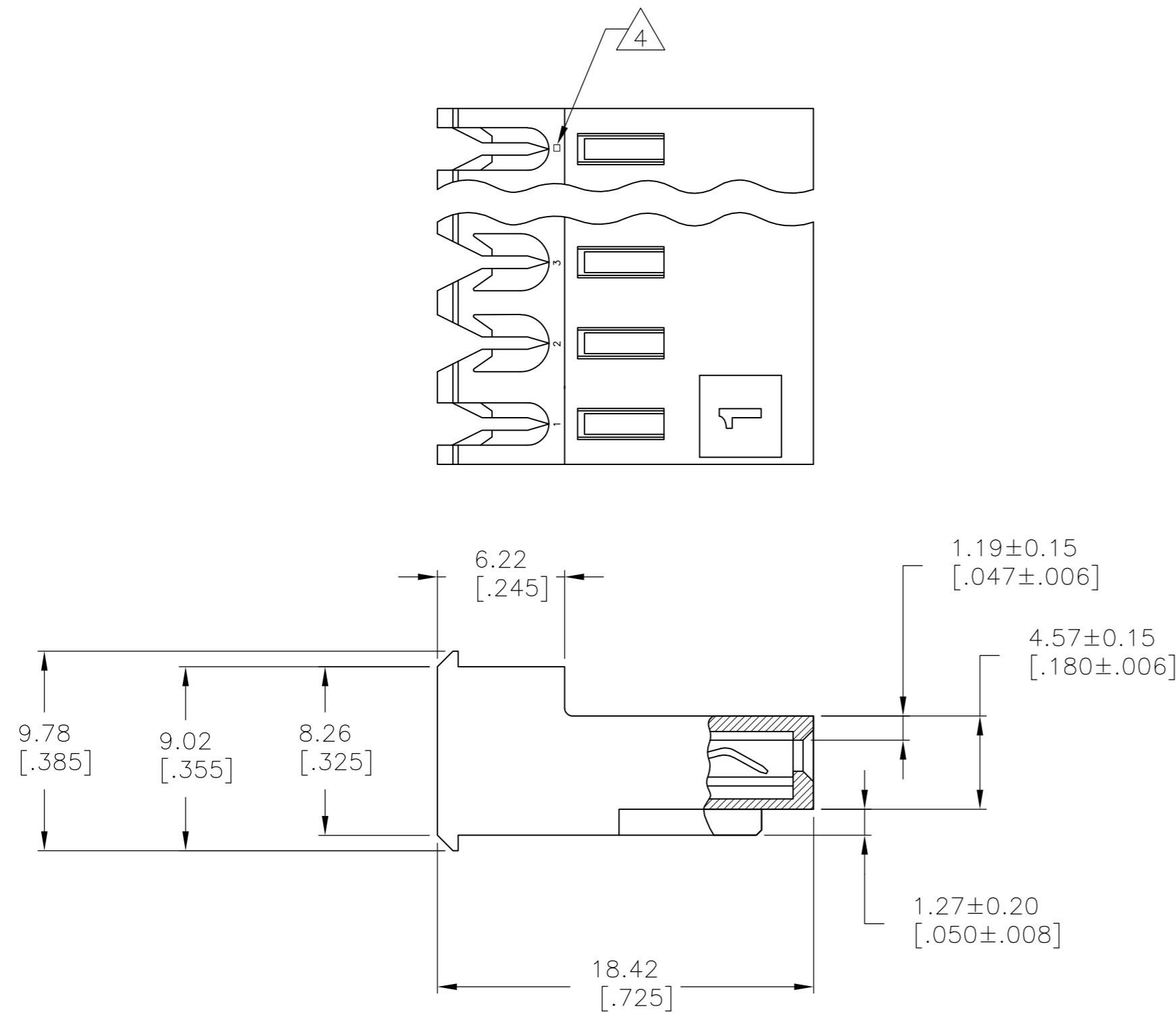


THIS DRAWING IS UNPUBLISHED. RELEASED FOR PUBLICATION
 © COPYRIGHT BY TYCO ELECTRONICS CORPORATION. ALL RIGHTS RESERVED.

LOC	DIST	REVISIONS			
P	LTR	DESCRIPTION	DATE	DWN	APVD
CM	00	E	ECO-07-012896	25JUN07	KE DB



- 1 MATERIAL: CONNECTOR - NYLON UL94V-2 (RED).
 CONTACTS - 0.30[.012] THICK COPPER ALLOY BRIGHT TIN-LEAD
 0.00203[.000080] MIN THICK FOR -2 THRU -28
 - 0.30[.012] THICK COPPER ALLOY MATTE WHISKER
 MITIGATED TIN 0.00203[.000080] MIN THICKNESS
 OVER NICKEL UNDERPLATE FOR -32 THRU -58.
- 2. CONTACTS ACCEPT 22 AWG WIRE WITH 2.41[.095] MAX INSULATION DIAMETER.
- 3. CONTACTS MUST ACCEPT 1.14±0.03[.045±.001] POST AND REMAIN LOCKED IN POSITION.
- 4 IDENTIFICATION NUMBER FOR LAST CIRCUIT MAY NOT APPEAR ON ALL ASSEMBLIES.
- 5. DIMENSIONS IN BRACKETS ARE IN INCHES.
- 6. HOUSING FEATURES ARE: FEED-THRU WITHOUT LOCKING RAMP.
- 7 CHARACTER SHALL BE 2.06[.081] HIGH ON A 4.01[.158] SQUARE FROSTED BACKGROUND.

FINISH	DIM A	NO. OF CIRCUITS	PART NO.
TIN	19.81 [.780]	5	3-643248-5
TIN-LEAD	19.81 [.780]	5	643248-5

THIS DRAWING IS A CONTROLLED DOCUMENT.

DWN B. LEWIS 12FEB91	Tyco Electronics Corporation Harrisburg, PA 17105-3608				
CHK R. SWING 12FEB91					
APVD D. CLARK 20FEB91					
PRODUCT SPEC 108-1051					
APPLICATION SPEC 114-1020	NAME MTA-156 CONNECTOR ASSEMBLY, 22 AWG, SPECIAL MARKING				
MATERIAL 1	FINISH 1	SIZE A2	CAGE CODE 00779	DRAWING NO. C-643248	RESTRICTED TO -
CUSTOMER DRAWING			SCALE 4:1	SHEET 1 OF 1	REV E

